



STINSON BEACH OWTS CLIMATIC ADAPTATION STUDY

November 4 2020



CSW | ST 2



Steve Kinsey
415.307.1370
P.O. Box 81
Forest Knolls, CA
94933
steve@civicknit.com



STINSON BEACH



GOLDEN GATE NATIONAL RECREATIONAL AREA

BOLINAS LAGOON

MT TAMALPAIS STATE PARK

BOLINAS BAY

Stinson Beach County Water District

Stinson Beach Library

Community Center

STINSON BEACH





STINSON BEACH PARK

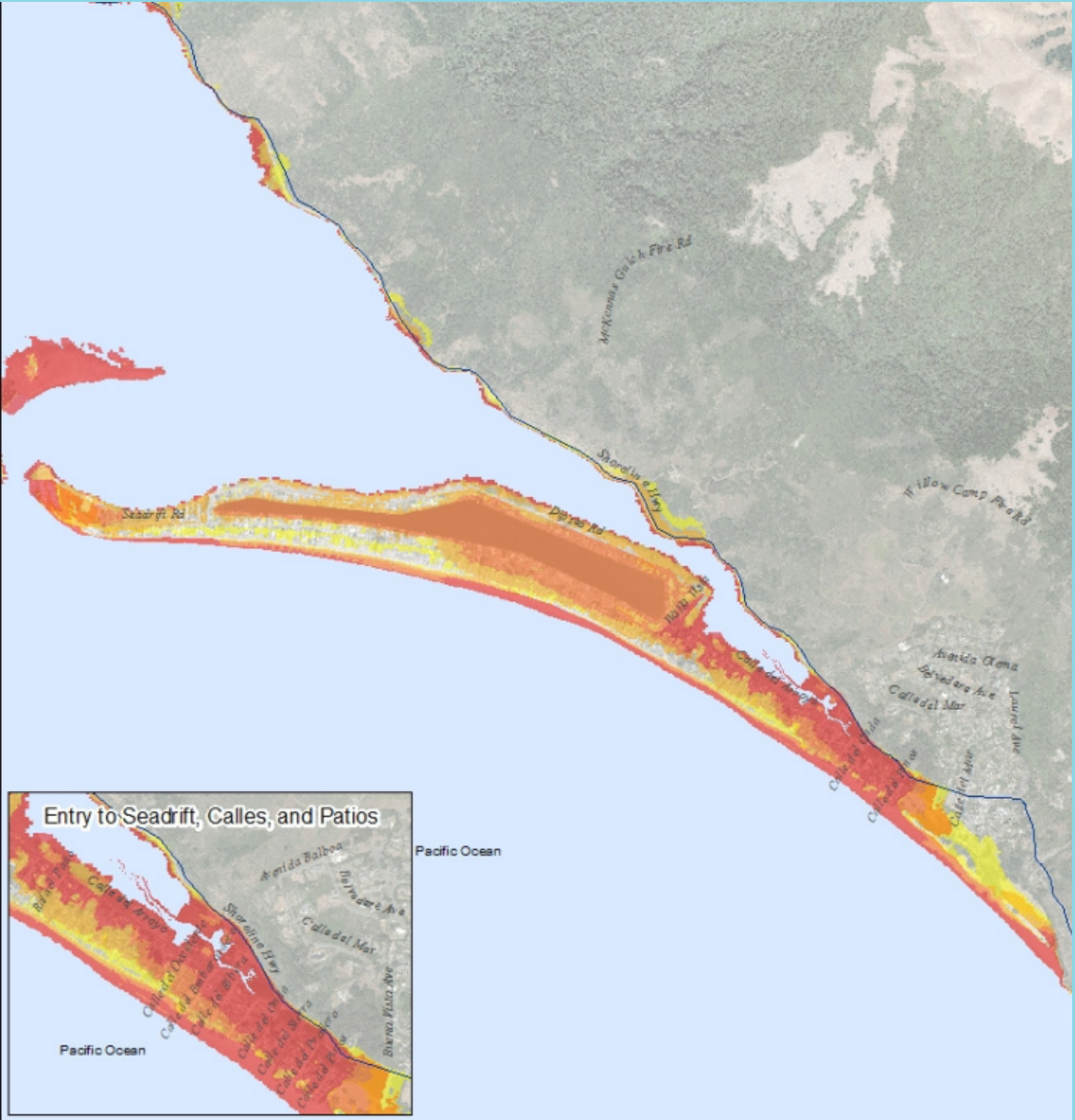
STINSON BEACH OWTS CLIMATIC ADAPTATION STUDY

RISK ASSESSMENT AND ACTION PLAN

- Background / History
- Vulnerability Assessment
- Funding Research
- Regional Meetings
- Action Plan
- Public Outreach

SEA LEVEL RISE SCENARIOS

C-SMART – MARIN COUNTY



Scenarios	
1	10" SLR + Annual Storm
2	10" SLR + 20-year Storm
3	20" SLR + 20-year Storm
4	40" SLR + 20-year Storm
5	80" SLR + 100-year Storm

By 2030	10 inches	Near Term
By 2030	10 inches + 100-yr storm	Near Term
By 2050	20 inches	Medium Term
By 2050	20 inches + 100-yr storm	Medium Term
By 2100	60 inches	Long Term
By 2100	60 inches + 100-yr storm	Long Term



Table 3: Maximum Existing / Permitted Wastewater Flow Rates			
Location	District Records # of Properties	Wastewater Flow Average (gpd)	Total (gpd)
Calles/Patios/Seadrift	478	312	149,000
Shoreline Hwy and Below	523	321	168,000
Stinson Beach	717	305	218,500



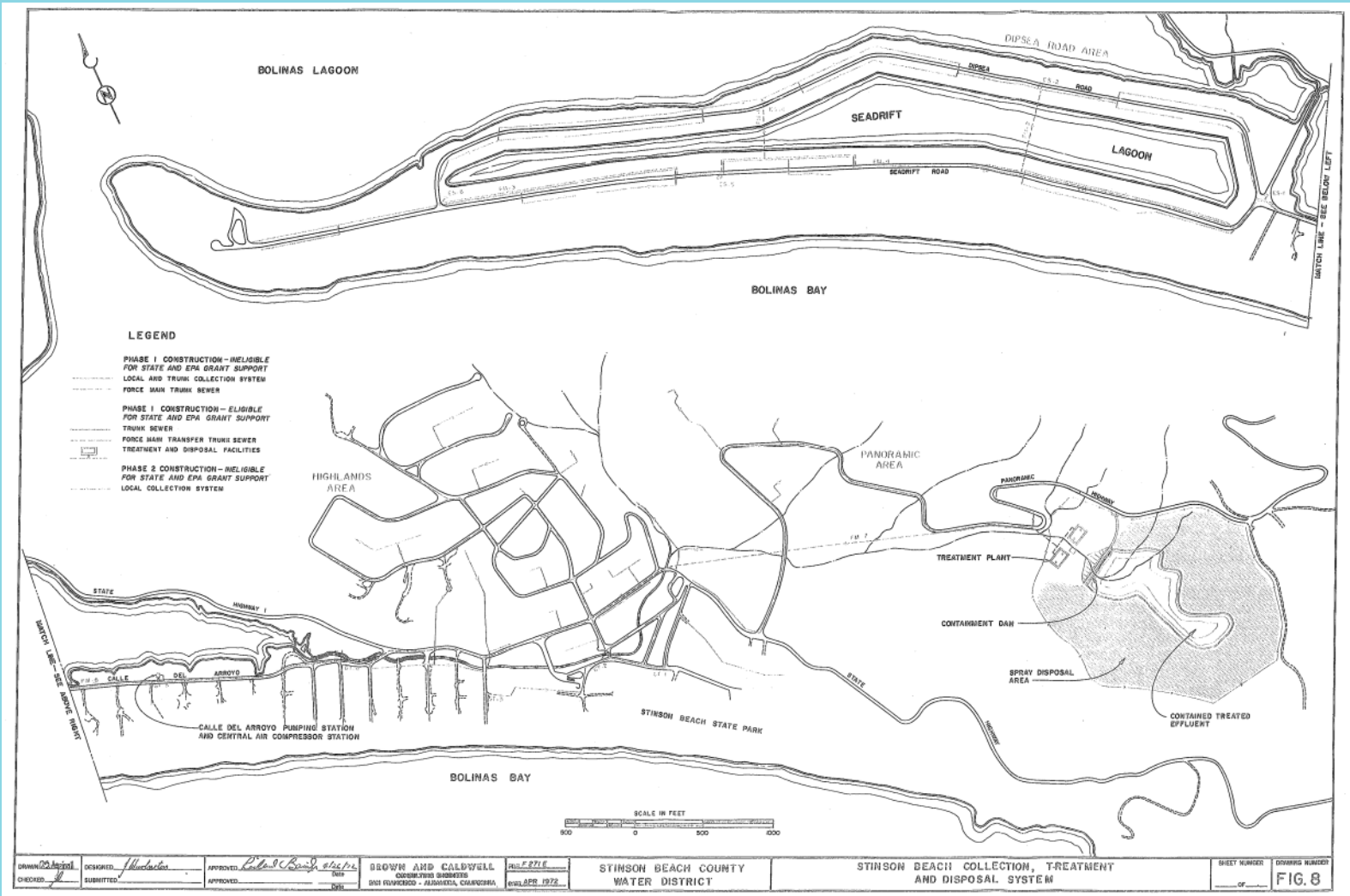
PROTECTION OF SURFACE AND GROUNDWATERS

STINSON BEACH OWTS CLIMATIC ADAPTATION STUDY

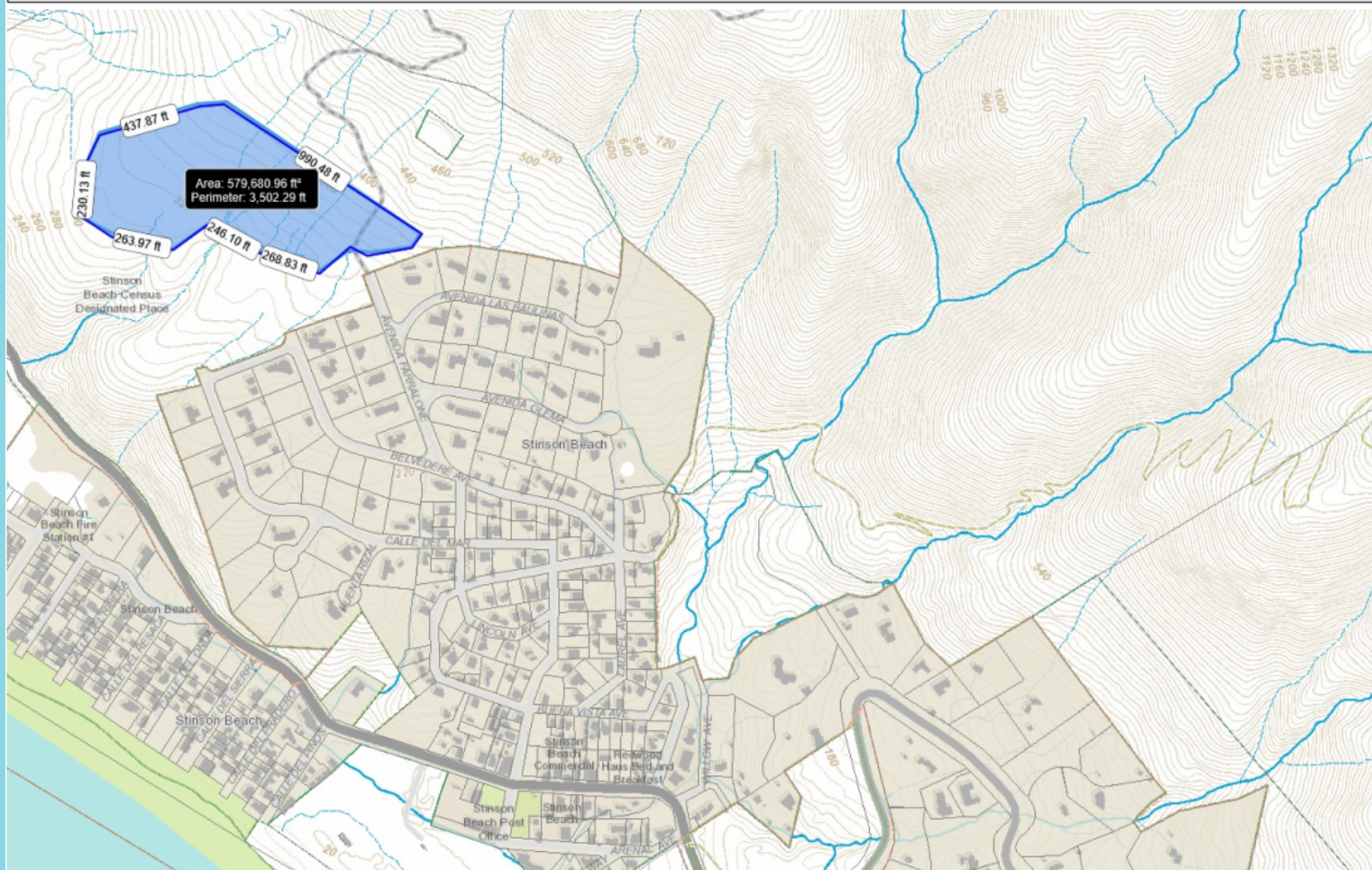
ADAPTATION STRATEGY

- Develop Series of Strategies
- Prioritize Adaptive Strategies
- Recommendations
- Funding Analysis and Reporting
- Public Outreach

WASTEWATER IS A RESOURCE, NOT A PROBLEM



CENTRALIZED COMMUNITY WASTEWATER SYSTEM STUDIES



COMMUNITY SEPTIC TAN EFFLUENT PUMPING (STEP) SYSTEMS AND DISPERSAL

NEAR TERM GOALS



LONG TERM GOALS



TENTATIVE SCHEDULE